



Moulton Parish Council

<https://moultonpc.org.uk>

Tender Documents For The Gardening Maintenance of Moulton Playing Field & Weaver Road Play Area

Introduction

Tenders are invited for the garden maintenance of two locations in the village of Moulton Cheshire.

1. Moulton Playing Field located off Main Road
2. Weaver Road Play Area



Moulton Parish Council

<https://moultonpc.org.uk>

Location Moulton Playing Field

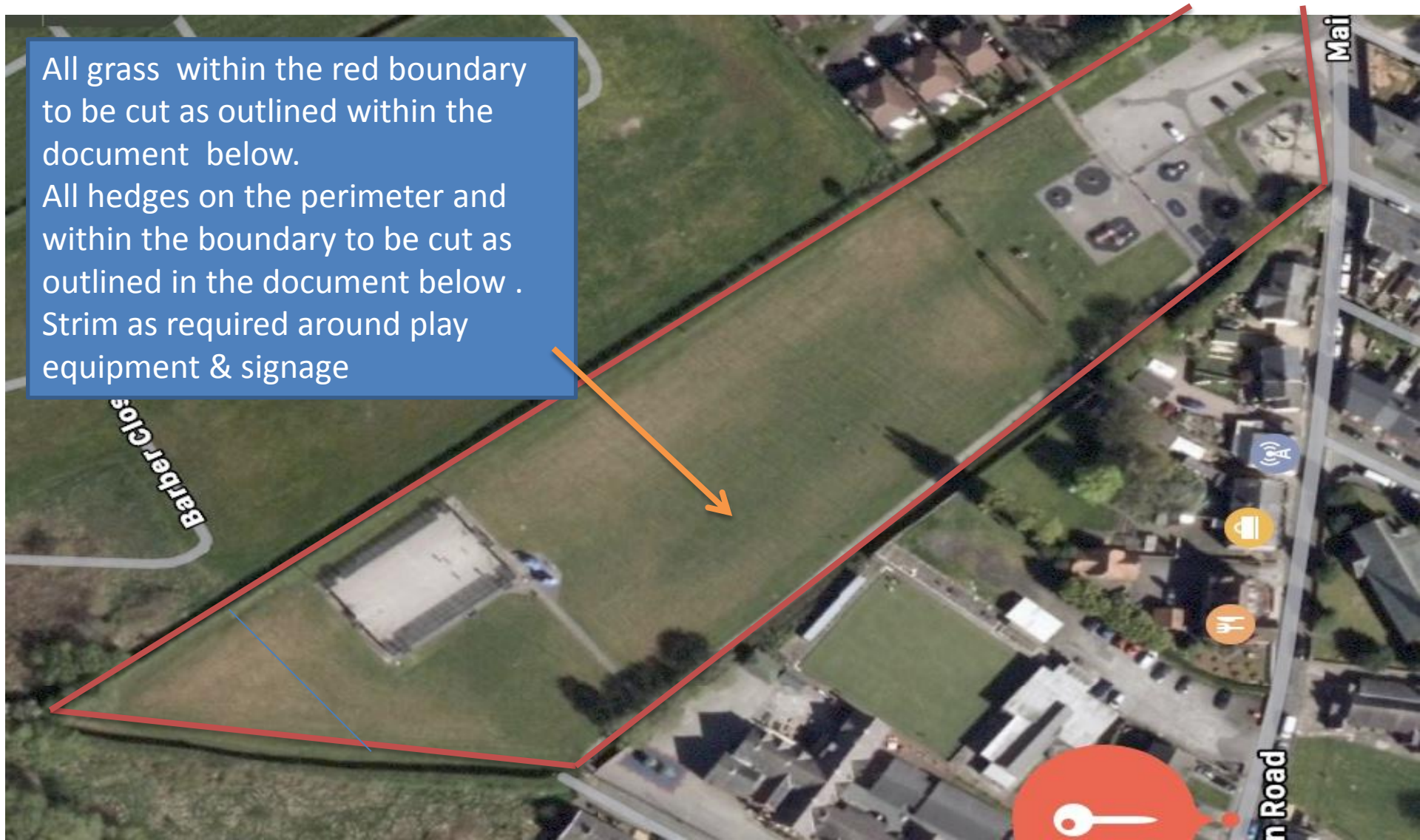


Moulton Parish Council

<https://moultonpc.org.uk>

Moulton Playing Field Boundary

All grass within the red boundary to be cut as outlined within the document below.
All hedges on the perimeter and within the boundary to be cut as outlined in the document below.
Strim as required around play equipment & signage



1. Grass Main Field & MUGA Hedge Park



The grassed areas are to be cut once in April and then twice a month from May to September inclusive.

Leave a margin of 1.5 metres around new planting.

A price is also required for a single ad hoc cutting of all grass, the clerk to advise the contractor when required

The perimeter hedge to be trimmed **once a year in autumn and cuttings removed** to keep tidy and maintain the same height & width, avoiding bird nesting time March-August inclusive
Strim and weed as required

All bins in park to be emptied monthly as a minimum

Weeds on walkways and carpark to be sprayed with environmentally & pet safe weedkiller



Moulton Parish Council

<https://moultonpc.org.uk>

1. Grass Verge & Trees Park



The grassed areas are to be cut once in April and then twice a month from May to September inclusive

A price is also required for a single ad hoc cutting of all grass, the clerk to advise the contractor when required

The trees are to be lopped in autumn to keep branches high , **at least 2.2 metres**, over the path and trimmed back and away from the path if required.

Strim and weed as required



Moulton Parish Council

<https://moultonpc.org.uk>

1. Grass Verge & Hedge Car Park



The grassed area are to be cut once in April and then twice a month from May to September inclusive.

Leave grassed areas marked for environmental projects.

A price is also required for a single ad hoc cutting of all grass, the clerk to advise the contractor when required

New growth is to be trimmed off the hedges and the cuttings removed

Strim and weed as required



Moulton Parish Council

<https://moultonpc.org.uk>

1. Grass Verge Near Cenotaph



Grass to be cut once in April then twice a month from May to September inclusive

The flowers beds to be left for local gardeners to tend and plant out.

Weed, edge and strim as required.



Moulton Parish Council

<https://moultonpc.org.uk>

1. Defibrillator Hedge Near Cenotaph



A trim of the height of the laurel hedging is required **once a year in spring, maximum height 2 metres.**

The sides of the hedge to be trimmed twice a year to give unrestricted access to the defibrillator.

Weed where applicable

All cuttings/weeds to be removed from site



Moulton Parish Council

<https://moultonpc.org.uk>

1. Twin Hedges & Grass In Park



All grassed areas are to be cut once in April and then twice a month from May to September inclusive
A price is also required for a single ad hoc cutting of all grass, the clerk to advise the contractor when required

New growth is to be trimmed off the two dividing hedges **once a year in autumn.**

Strim around any play equipment



Moulton Parish Council

<https://moultonpc.org.uk>

2 Weaver Road Play Area



The red square represents the boundary of the site which is defined by walling and fencing. All works are to be within this boundary

2. Weaver Road Play Area



All grassed areas are to be cut once in April and then twice a month from May to September

A price is also required for a single ad hoc cutting of all grass, the clerk to advise the contractor when required

New growth is to be trimmed off all hedges and shrubs in the Autumn and the waste removed, to the height indicated by the red arrow line



Moulton Parish Council

<https://moultonpc.org.uk>

2. Weaver Road Play Area



All grassed areas are to be cut once in April and then twice a month from May to September inclusive

Paths are to be sprayed with environmentally and pet safe weedkiller twice a year and the area is to be strimmed as required.

All shrubs and hedge plants trimmed/lopped in Autumn and kept to the height on the red arrow



Moulton Parish Council

<https://moultonpc.org.uk>

2. Weaver Road Play Area



Existing flower beds are to be left for the residents to tend and replant as required.

These beds are used by gardeners in the community

All trees and shrubs to be trimmed/lopped in Autumn with the waste removed



Moulton Parish Council

<https://moultonpc.org.uk>

2. Weaver Road Play Area



Generally maintain sweep and rake as required, noting any weather damaged/unsafe trees or shrubs.

Reporting to the clerk any damage vandalism or evidence of dogs being in the area (No dogs are allowed)

Bins to be emptied monthly



Moulton Parish Council

<https://moultonpc.org.uk>

Summary

- All responses to clerk@moultonpc.org.uk
- Safe Contractor accreditation preferred
- Risk Assessments to be submitted with quotation
- Method statements to be submitted with quotation
- All bins in the two areas to be emptied once a month January-December inclusive
- All weed-killers used are to be environmentally & pet safe